

MJTP/PHAP33 series

12mm Square tact switches •
Through hole



DISTINCTIVE FEATURES

- SPST momentary action
- Excellent tactile feedback (snap dome)
- Long operating life for high reliability
- Molded-in terminals minimizing wicking of flux or solder
- Flush, round, keyed or square actuator
- Through hole mounting



ENVIRONMENTAL SPECIFICATIONS

- Operating Temperature: -20 °C to +70 °C (-4°F to +158 °F)
- Storage Temperature: -30 °C to +80 °C (-22 °F to +176 °F)
- Wave soldering: 255 °C for 5 seconds max
- Manual soldering: 300 °C for 3 seconds max



ELECTRICAL SPECIFICATIONS

- Contact rating: 50 mA 12VDC
- Contact Resistance: 100 mΩ - 500 mΩ max. depending on series
- Insulation Resistance: 100 MΩ min. at 500VDC
- Dielectric Strength: 250 VAC / 1 minute
- Electrical life: 50,000 - 100,000 cycles depending on series
- Contact bounce: Less than 5 msec.



MECHANICAL SPECIFICATIONS

- Operating force: 160 gf ±50gf to 260gf ±50gf
- Mechanical life: 50,000 - 100,000 cycles depending on series
- Plunger travel: 0.30 ±15 mm (.012" ±.006")



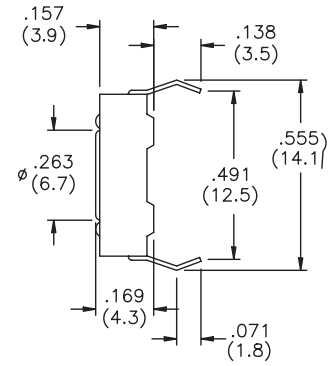
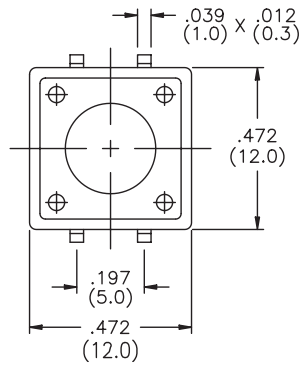
MATERIALS

- Body: PBT
- Contact: Silver plated phosphor bronze
- Cover: Stainless Steel
- Terminals: Silver plated brass
- Actuator: Thermoplastic

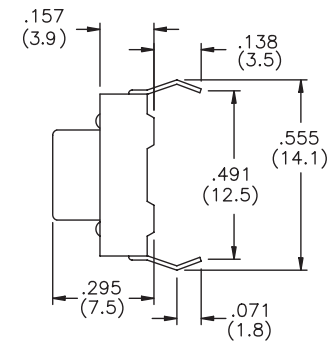
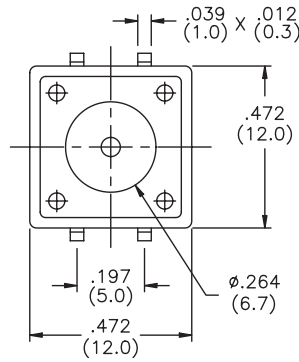
MJTP/PHAP33 series

12mm Square tact switches • through hole

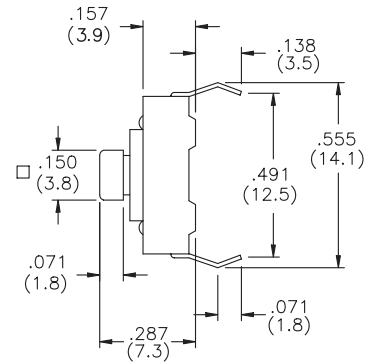
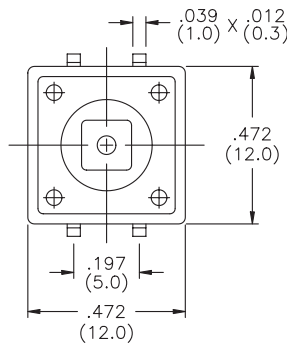
MJTP1212
PHAP3320 Flush actuator



MJTP1212A
PHAP3320A Round actuator

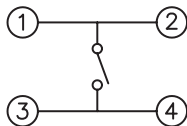


MJTP1212C
PHAP3321 Square actuator



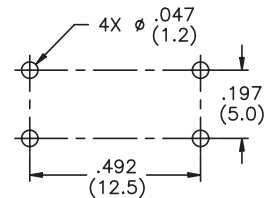
Caps available - see below

SCHEMATIC

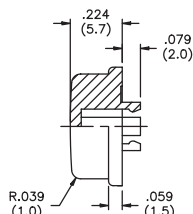
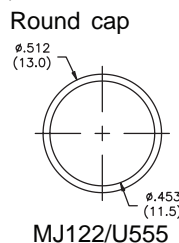
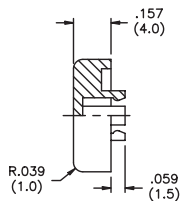
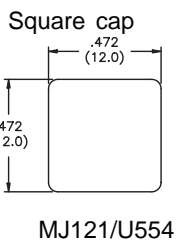


PRINTED CIRCUIT BOARD LAYOUT

Layout Tolerances;
Linear: ± .004" (± 0,1mm)
Holes: ± .002" (± 0,05mm)



CAPS for MJTP1212C/PHAP3321 only



Note - add digit from table to cap part numbers above for color.
Example - **MJ1212** indicates square black cap.

No.	Color
1	blue
2	black
3	green
5	yellow
6	red
7	ivory